



CORPORATE PROFILE



TABLE OF CONTENT

01 About
G-WISE

02 Our Thematic
Areas

03 Audience &
Partnership Profile

04 Our
Accomplishments

10 Visual Narrative
of Achievements

11 Our
Team

13 The
Founder

14 Testimonials

15 Contact
Us

ABOUT G-WISE INITIATIVE

Empowering Girls for Sustainable Education and Positive Impact

The Girl-Woman Initiative for Sustainability and Education (G-WISE INITIATIVE) was founded in 2014 and has developed as an organization deeply rooted in empowering the women and girls. With heartfelt commitment to addressing the complex challenges hindering the growth of young girls, G-WISE INITIATIVE fervently strives to guide African girls toward paths that lead to a fulfilling life, enabling them to make positive contributions to their families and society at large.

Recognizing the constraints within African settings—scarce resources and often hostile environments for females - GWISE INITIATIVE focuses on nurturing a girl's inherent potential, aiding her in realizing her life's purpose and fostering a positive impact on her community. Central to their approach is identifying and supporting the most vulnerable girls, and partnering with various entities to provide education, mentorship and essential support; ultimately empowering them.



VISION

“A world where girls and women are fully actualized and actively contribute to the development of their communities.”

MISSION

“To build a world where no woman or young girl feels alone and get every possible help they need to create and live a life of significance.”



OBJECTIVES

- 1 Empower girls through quality education, emphasizing STEAM fields and keeping them informed about digital technology, health, and entrepreneurship.
- 2 Promote community-level programs fostering girls' growth, enhancing women's leadership roles, and combating poverty among young girls.
- 3 Collaborate to eliminate exploitation, marginalization, and abuse of girls, working with like-minded organizations.
- 4 Develop and implement programs promoting healthy self-esteem, morals, and etiquette in girls through social and educational initiatives.
- 5 Support the development of social and entrepreneurial skills for girls/women empowerment, self-reliance, and personal fulfillment.

THEMATIC AREAS

Nurturing Potential, Fostering Change.



Girls' Education and Growth

01



Girls' Leadership and Inspiration

02



Women and Girls' Health

03



Girls' Empowerment / Poverty Eradication

04



Mentoring and Entrepreneurship

05



Moral and Social Development

06

Building Bridges, Igniting Change

Understanding our audience and fostering strong partnerships are the cornerstones of our commitment.

GIRLS

AGE GROUP	DEVELOPMENTAL PHASE	UNIQUE CHALLENGES/PROGRAM FOCUS
12 – 17 years	The delicate adolescent years	Early child marriages, access to quality education and healthcare, Trafficking & Exploitation, etc. Therefore program structure leans hard towards integrating solutions for boosting confidence through education and strengthening of moral sensibilities and concerns.
18 – 21 years	Transitioning into adulthood	Post-secondary education and career choices therefore program structure highlights solutions accordingly.

WOMEN

AGE GROUP	DEVELOPMENTAL PHASE	UNIQUE CHALLENGES/PROGRAM FOCUS
22 years and above	Full womanhood	Gender & domestic violence, poverty, access to quality healthcare, access to justice & legal rights etc. Accordingly, G-WISE programs in this instance focus on addressing intergenerational economic challenges. Programs also provide a range of economic empowerment solutions that tend to have a ripple effect.

SPONSORS & PARTNERS

SECTOR	RELATIONSHIP	SPONSORSHIP/PARTNERSHIP DETAILS
Civil Society	Partners	Resource sharing, enhanced expertise, increased reach and impact, improved efficiency, learning and knowledge sharing, enhanced advocacy and influence.
Funding Organizations & Government	Sponsors & Partners	Financial support, credibility and visibility, access to networks and resources, policy influence, capacity building.
Private Sector	Sponsors & Partners	Access to resources, innovation and expertise, expanded reach and networks, capacity building and training, sustainable development initiatives, influence and advocacy, in kind contributions, pro-bono support, and innovative funding models.

ACCOMPLISHMENTS

Empowering Futures, Celebrating Achievements

Empowering women and girls lies at the heart of our mission as an NGO committed to fostering positive change in society. Some of the few areas of accomplishment include:

- 1** The annual G-WISE Girls Empowerment Conferences
- 2** The G-WISE Ambassadors Club for Leadership
- 3** Outreach Programs to Schools
- 4** Collaborations and Partnerships for Poverty Alleviation

The Annual G-WISE Girls Empowerment Conferences - First Edition

PROGRAM DETAILS

DATE:
Thursday, 6th March, 2014

VENUE:
Conference Hall Maybach Hotel, Independence Layout, Enugu

THEME:
“Women & Girls Inspiring Change”



SPECIFIC ACCOMPLISHMENTS

- Represented the launch of a unique take on Girl-Women issues in Southeastern Nigeria.
- Brought together a diverse group of participants from various socio-economic backgrounds.

Empowering Futures, Celebrating Achievements

The Annual G-WISE Girls Empowerment Conferences - Second Edition

PROGRAM DETAILS

DATE:
Thursday, 9th March, 2017

VENUE:
Arcade Hall, De Dome Events Center, New Haven, Enugu

THEME:
“Be The Best of You”



SPECIFIC ACCOMPLISHMENTS

- Enlarged the network of mentors.
- **Self-Empowerment Workshops:** Conferences provided workshops on self-confidence, self-esteem, resilience and personal development to empower girls to recognize and embrace their strengths and capabilities.
- **Skill-building Sessions:** Also featured were sessions on skills development such as leadership, communication, problem-solving, critical thinking and decision-making to equip girls with the tools they need to succeed.
- **Substantive take-home benefits:** Achieved substantive take-home benefits beyond workshops and mentor interactions by imparting tangible skills, fostering lasting mindsets and providing resources that girls can apply for the rest of their lives (e.g. of take-homes: Personalized Action Plans(PAP), Peer Support Networks(PSN), Resource Toolkits, etc.
- **Mentorship Opportunities:** Participants were connected to successful role models and mentors who shared their experiences, offered guidance and inspired them to pursue their goals.

ACCOMPLISHMENTS

Empowerment for the Future

The Annual G-WISE Girls Empowerment Conferences - Third Edition

PROGRAM DETAILS

DATE:
Thursday, 12th October, 2023

VENUE:
Conference Hall, Villa Garden Hotel, Owerri, Imo State

THEME:
“Harnessing Leadership Potential in Girls through Digital Technology.”



SPECIFIC ACCOMPLISHMENTS

- Hosted keynote speeches from industry experts and provided insights and inspiration about the opportunities and importance of technology in lives of the participants.
- The “Community Finance Project”, a tech solution for extension of funding to people with disabilities developed by **SIFED TECH TEAM** of Marist Bicentenary College, Ngor Okpala (this product is available at www.siefed.com)
- The “Virtual Science System Project”, a web based platform for students with poor access to standard science labs developed by **TEAM PEARLVILLE** of Pearlville Secondary School Avu, Owerri, Imo State

ACCOMPLISHMENTS

Empowerment for the Future

The G-WISE Ambassadors Club (GAC)

PROGRAM DETAILS

Inauguration of the maiden chapter of G-WISE Ambassadors Club (GAC)



SPECIFIC ACCOMPLISHMENTS

- Successful flag off of G-WISE AMBASSADORS' CLUB (GAC) Program



ACCOMPLISHMENTS

Empowerment for the Future

Outreach Programs to Schools

PROGRAM DETAILS

Outreach involves organizing meetings that encourage enhanced self-esteem among young girls, personal development & career counseling.



SPECIFIC ACCOMPLISHMENTS

- Several secondary schools in the Southeast impacted.



Empowerment for the Future

Collaborations and Partnerships for Poverty Alleviation

PROGRAM DETAILS

G-WISE responds to the pressing challenges faced by girls and their families due to poverty in Nigeria and Africa. By actively collaborating and partnering with organizations, we strive to provide essential support to the most impoverished members of our society.



SPECIFIC ACCOMPLISHMENTS

- **Collaboration with Victim Support Fund (VSF):** G-WISE partnered with the VSF and individuals to ensure the efficient and transparent distribution of palliative items to indigent households in selected local governments in Delta and Imo States between 2020 and 2022. The part facilitated the distribution of basic necessities to the poorest of the poor in society, addressing the challenges faced by girls and their families due to poverty in Nigeria and Africa.
- **Provision of Support for Impoverished Households:** G-WISE continues to play a pivotal role in partnering with philanthropic individuals and organizations to ensure transparent and efficient delivery of basic necessities to vulnerable households.
- **Access to Education and Skills Acquisition:** G-WISE also continues to partner with philanthropic individuals to intervene in providing education and skills acquisition opportunities for disadvantaged girls.

NOTE: Based on our vision and mission, the G-WISE approach to dissemination of programs incorporates the STEAM approach in empowering girls within the framework of the girls' empowerment conferences.

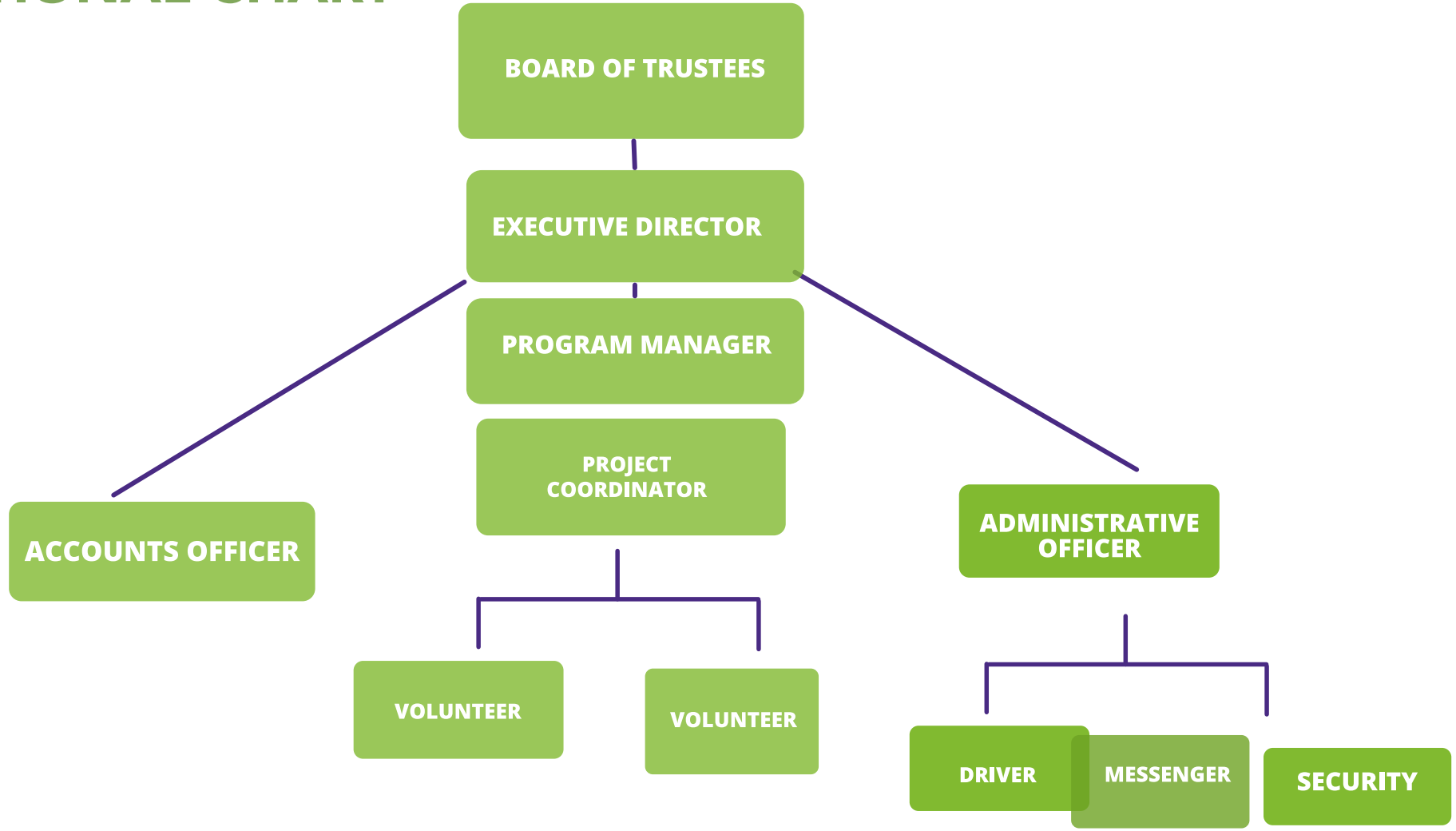
STEAM which stands for Science, Technology, Engineering, Arts and Mathematics is a method of education that is inter-disciplinary & based on real world situations where the solutions to problems are similarly multi-disciplinary in nature. In line with STEAM principles, the empowerment conferences equips girls with the an ecosystem of knowledge, skills and confidence to excel in vital areas.

VISUAL NARRATIVE OF ACHIEVEMENTS



OUR TEAM

G-WISE INITIATIVE ORGANISATIONAL CHART



TEAM DESIGNATIONS & RESPONSIBILITIES

Collaborative Excellence

Unveiling the Roles and Responsibilities that drives G-WISE INITIATIVE's Empowerment Mission.



01 Board of Trustees

- Setting strategic direction and goals for the organization.
- Providing oversight and guidance on major decisions.
- Ensuring compliance with legal and ethical standards.
- Fundraising and donor relations.
- Advocating for the NGO's mission and objectives.

02 Executive Director

- Overall leadership and management of the organization.
- Developing and implementing strategic plans in alignment with the mission.
- Supervising senior staff and program managers.
- Building partnerships and networks with other organizations and stakeholders.
- Fundraising and financial management oversight.

03 Program Manager:

- Designing, planning, and implementing programs focused on women and girls.
- Supervising program staff and ensuring program effectiveness.
- Monitoring and evaluating program outcomes and impact.
- Reporting to the Executive Director on program progress and challenges.
- Developing partnerships with relevant stakeholders.

04 Project Coordinator

- Implementing specific projects within the programs.
- Coordinating project activities, timelines and resources.
- Monitoring project progress and managing risks.
- Aligning projects with overall goals in collaboration with program managers
- Reporting on project outcomes and challenges.

05 Accounts Officer

- Managing financial transactions, budgets, and financial records.
- Preparing financial reports and statements.
- Ensuring compliance with financial regulations and internal policies.
- Assisting in grant proposals and fundraising efforts by providing financial data.

06 Administrative Officer

- Handling day-to-day administrative tasks and office management.
- Managing communication, scheduling, and coordination within the organization.
- Overseeing human resources functions, including hiring and onboarding.
- Procurement and management of office supplies and equipment.

07 Driver

- Safely transporting staff, materials, and equipment as required.
- Maintaining the vehicle in good condition and ensuring its regular maintenance.
- Following safety and traffic regulations.
- Assisting with logistical support for events or programs

08 Security

- Ensuring the safety and security of the organization's premises, staff and assets.
- Implementing security protocols and procedures.
- Monitoring access and responding to security incidents or emergencies.

09 Messenger

- Handling internal and external mail and deliveries.
- Assisting with basic administrative tasks or errands as needed.
- "Assisting office operations with essential errands.

10 Volunteers

- Supporting various programs and projects as per their expertise and availability.
- Assisting in outreach, advocacy, events or administrative tasks.
- Providing valuable skills and time to further the NGO's mission in various capacities.

THE FOUNDER

Guiding Women and Girls on Paths of Empowerment, Entrepreneurship and Personal Branding.



Girl-Woman Initiative for Sustainability and Education (G-WISE) was established by Nkeiruka Nzekwe, a certified National Accountant affectionately known as Nikki. Following an illustrious 17-year tenure in the Federal Public Service, where she notably led the Accounts Department of the Nigerian Coal Corporation, she opted for voluntary early retirement to pursue her enduring passion for entrepreneurship.

As the CEO of Kazuri Global Services, a distinguished limited liability company specializing in crafting luxury fashion and lifestyle products, Nikki caters to a diverse and enthusiastic clientele. Additionally, she spearheads LifedesignwithNikki™, her coaching enterprise, serving as a personal brand strategist. Her focus lies in guiding women aged over 40 to revamp their lives and cultivate impactful personal brands, empowering them to effectuate change, leave a lasting legacy, and harness their potential for positive influence.

The inception of G-WISE Initiative in March 2014 stands as a testament to her enduring vision for a world where women are empowered, enlightened, and dignified. Driven by an unwavering passion for guiding young girls, she effortlessly collaborates with the G-WISE team and volunteers, striving to unlock the full potential of every girl she encounters.

Beyond her professional commitments, Nikki is a wife and mother who finds inspiration in the following profound quote by former UN Secretary General, Ban Ki Moon: "A girl is as valuable to the world as a tree is to the forest. When a tree grows up straight and strong, the whole community benefits. When a girl grows up straight and strong, her family, her community, and even her country can feel the positive effects." This ethos propels her dedication to the empowerment and upliftment of girls and women in society.

G-WISE TESTIMONIALS

Voices of Impact: Stories of Empowerment and Transformation



★★★★★

“The conference gave me the confidence that I can achieve what I want and my advice for GWISE is to keep up with this organization that has created a positive impact in my life. I must say that GWISE is God sent and I know that with this organization, she can touch the lives of many women around the world. And I equally pray that God will send his blessing on you and reward you for the good work you started.”

~ Nkemakonam Okechukwu (Student) Providence High School, Enugu

★★★★★

“Very great impact. Please don't let this dream die.”

~ Dr Lois Nnoli, Former Medical Director, Colliery Hospital, Enugu

★★★★★

“I am glad that an organization like this exists. It has really helped me. God bless you all.” ~ ThankGod Faith Osagbemoure (Student) FUTO International School, Owerri

★★★★★

“My advice is that this program should not cease regardless of difficulties and problems because the impact is massive on our young ladies.”

~ Onyewuchi Victoria (Student) Pearlville School, Avu, Imo State.

Reach Out to G-WISE INITIATIVE for Inquiries, Collaboration, Sponsorship, Partnerships and Volunteering Opportunities.



Plot 15 A Ivory Estate Parcel A,
Trans-Ekulu, Enugu, Nigeria



gwiseafrica@gmail.com
www.gwise.org



+2348037476431
+2347085064620

CONTACT US

Connecting for Change

Contact Now



Thank You